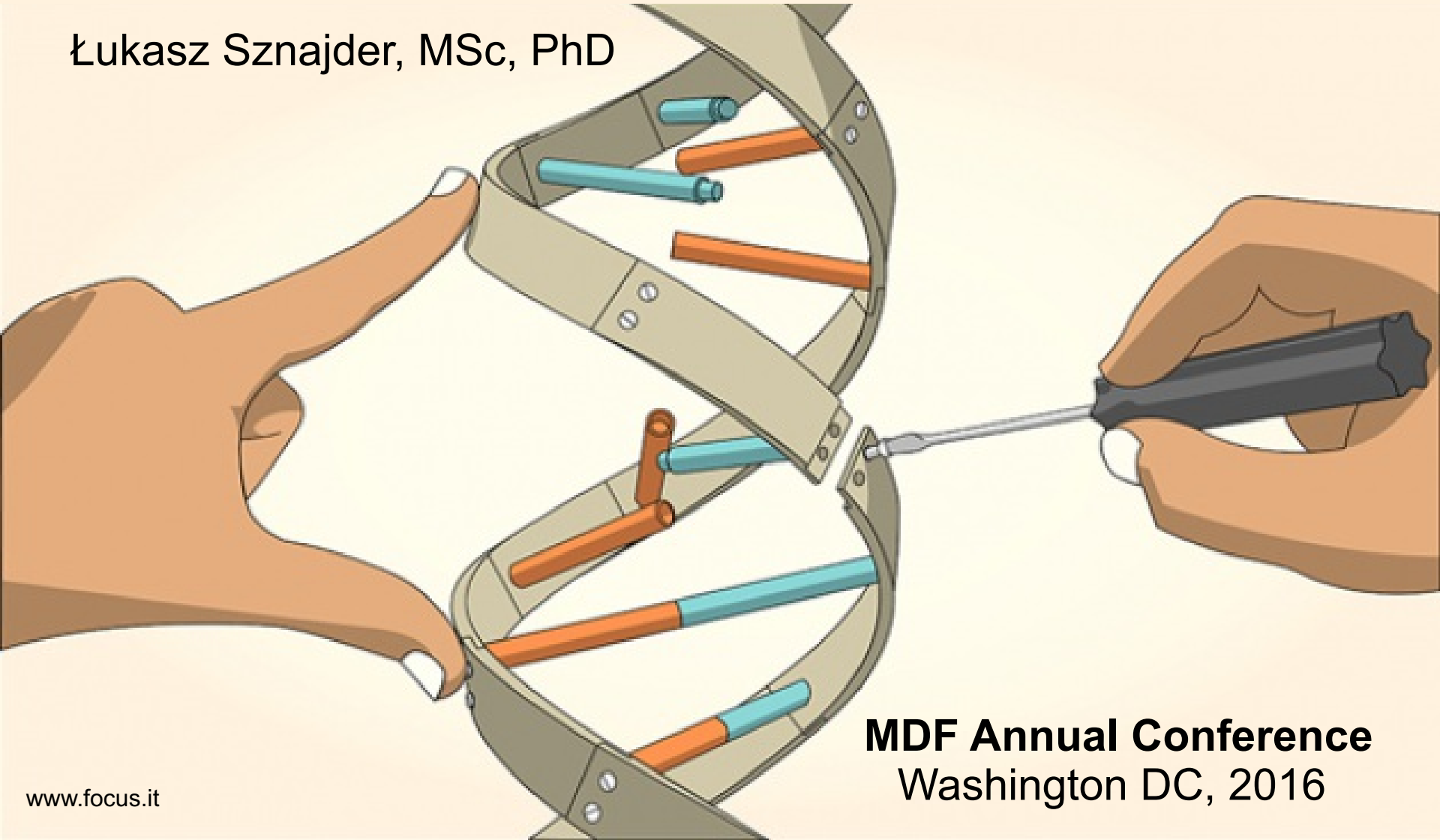


mouse model for DM2

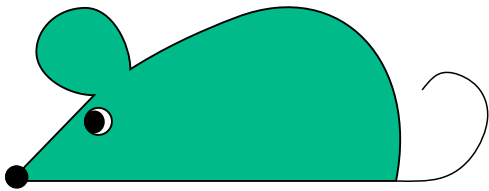
Łukasz Sznajder, MSc, PhD



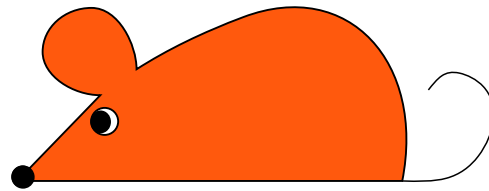
MDF Annual Conference
Washington DC, 2016

What is a DM mouse model?

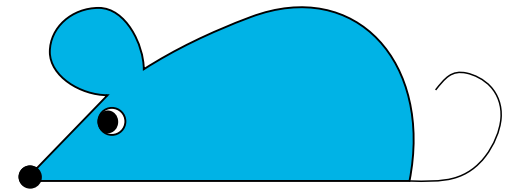
DM mouse models



DM1



DM2



DM1 & 2

Cohort of DM mouse models

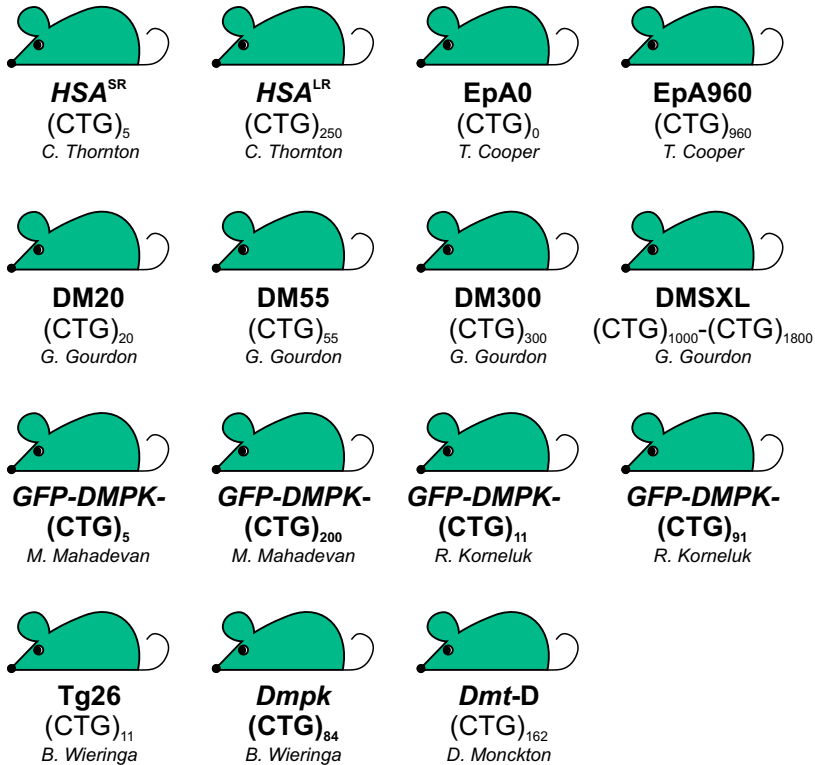
C(C)TG repeats expression

Gene deletion in DM loci

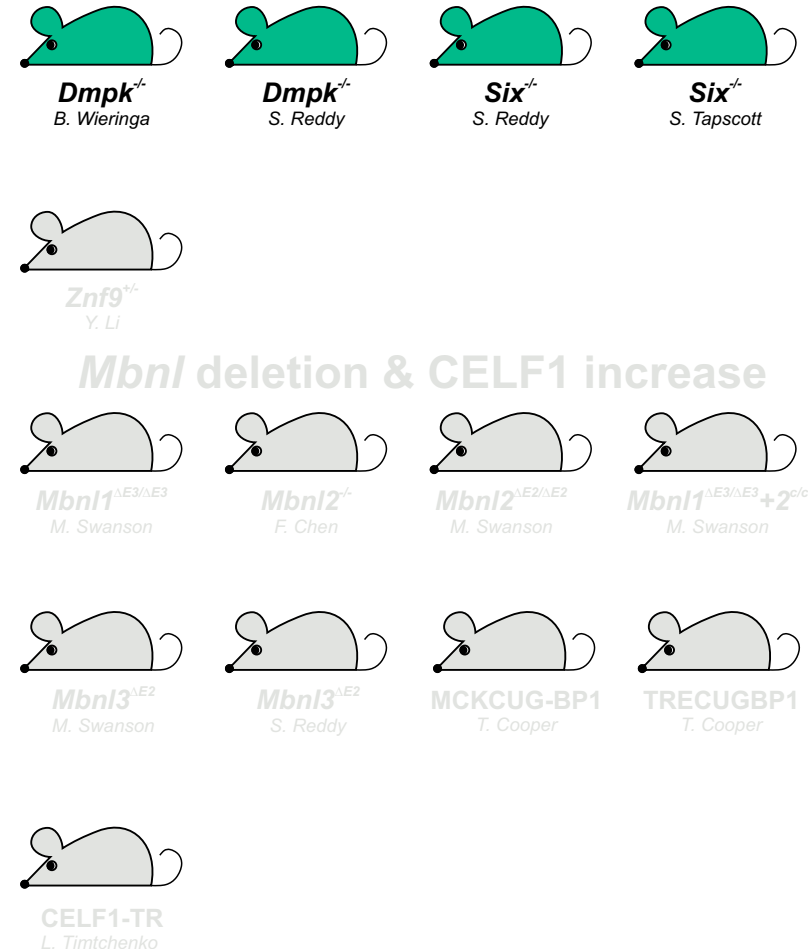


What did we learn from models?

C(C)TG repeats expression



Gene deletion in DM loci



Mbnl deletion & CELF1 increase

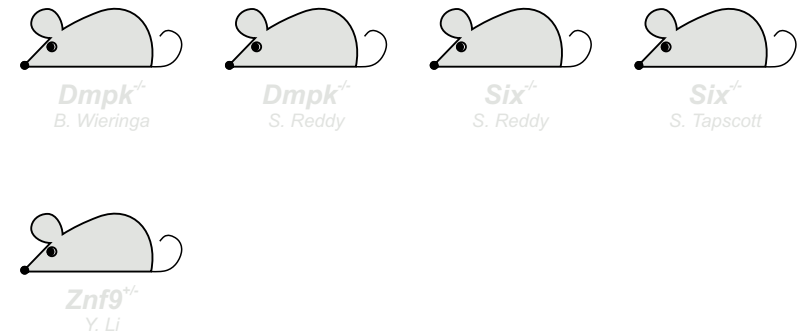
RNA with CUG expansion is toxic for mouse.

What did we learn from models?

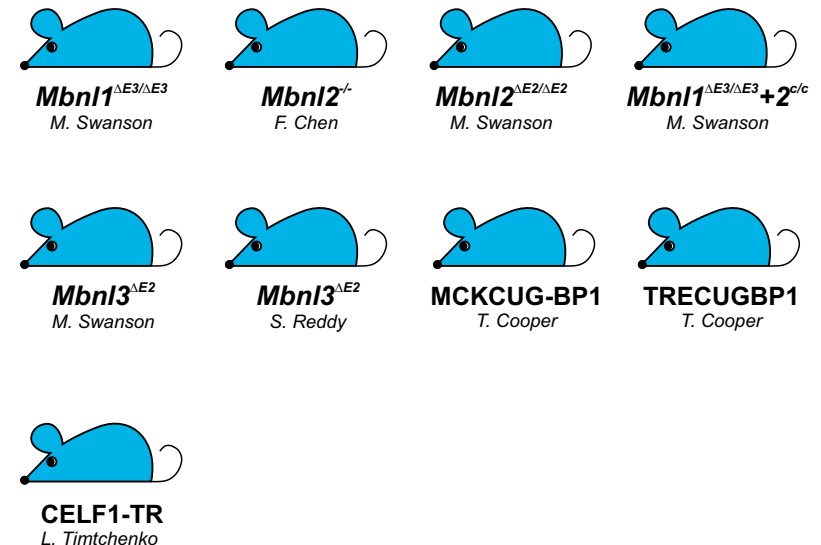
C(C)TG repeats expression



Gene deletion in DM loci



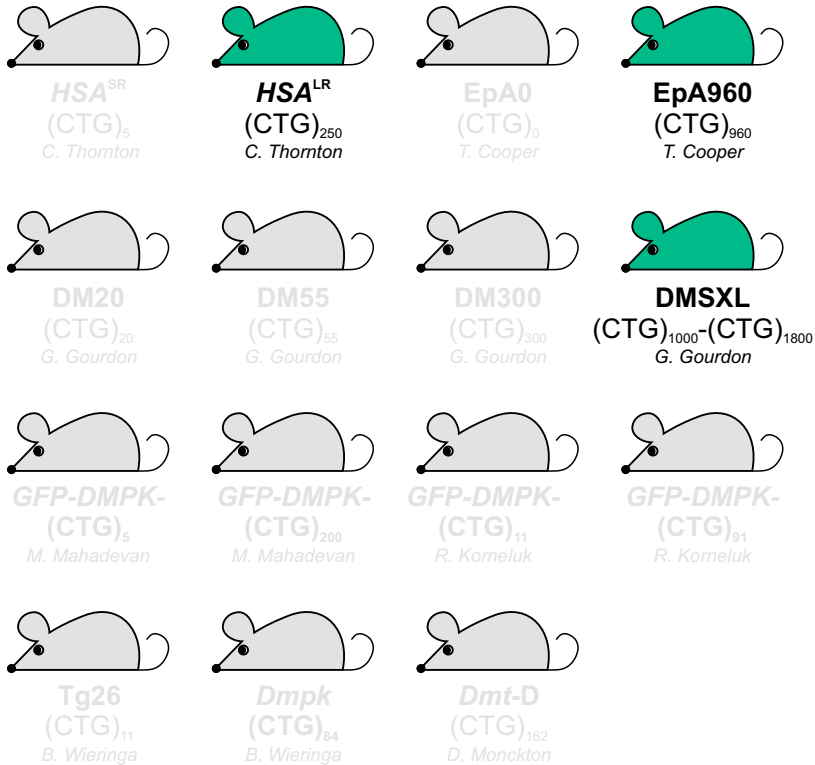
Mbnl deletion & CELF1 increase



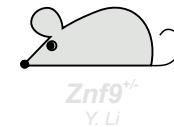
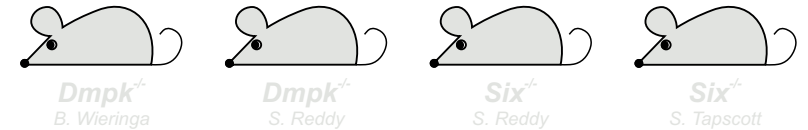
Crucial RNA metabolism regulators are involved

What did we learn from models?

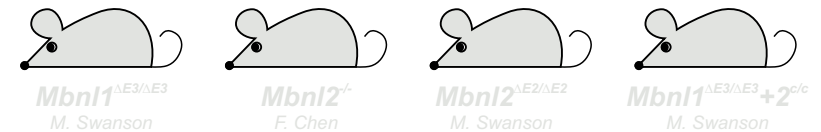
C(C)TG repeats expression



Gene deletion in DM loci



Mbnl deletion & CELF1 increase



Efficiency and toxicity
of therapeutics

What specific about DM2?

C(C)TG repeats expression



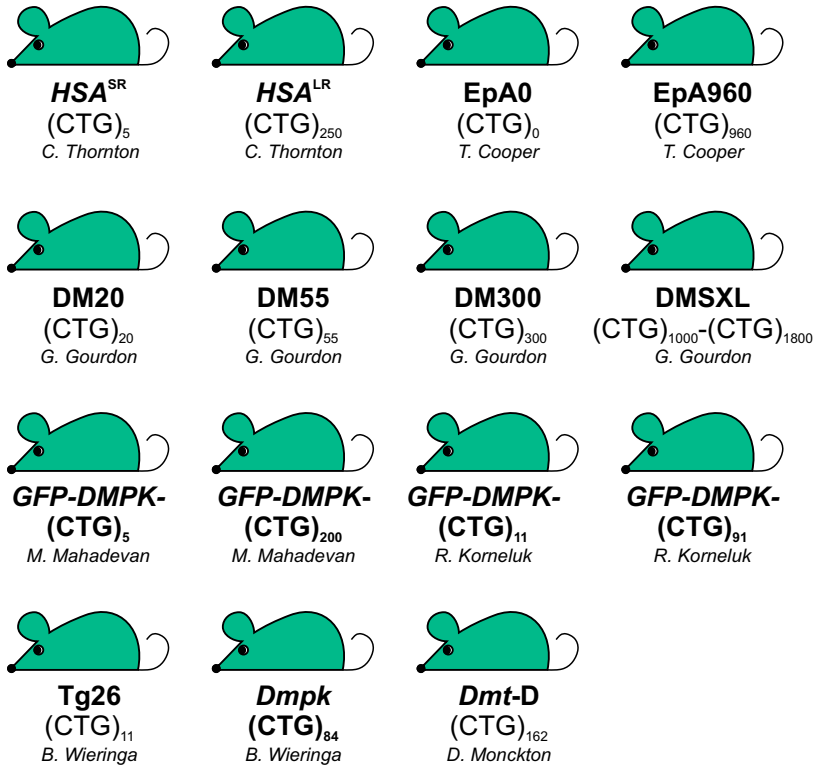
Gene deletion in DM loci



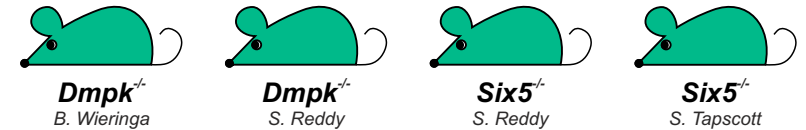
Not much!

Cohort of DM mouse models

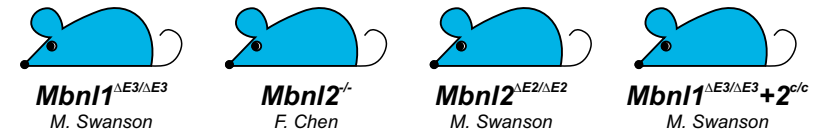
C(C)TG repeats expression



Gene deletion in DM loci



Mbnl deletion & CELF1 increase



Mouse models relevant for



Urgent needs in the DM2 field

Why does DM2 have different onset, but also main symptoms as DM1?

Are DM2 and DM1 similar diseases in terms of molecular pathomechanism?

What is a rational therapeutic strategy for DM2?



We must generate DM2 mouse model!



ADAM MICKIEWICZ
UNIVERSITY
IN POZNAŃ

Poznań

Gainesville, FL

UF UNIVERSITY of
FLORIDA



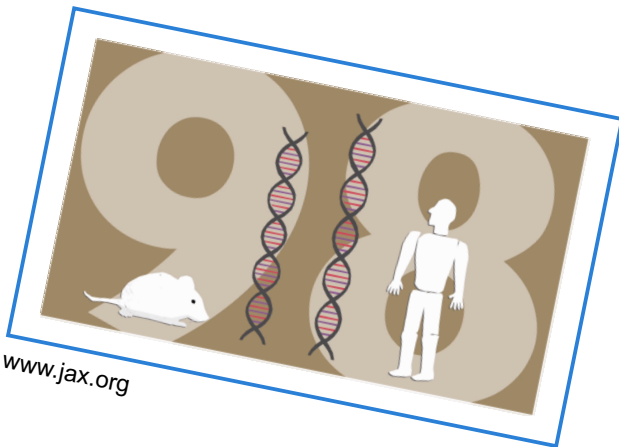
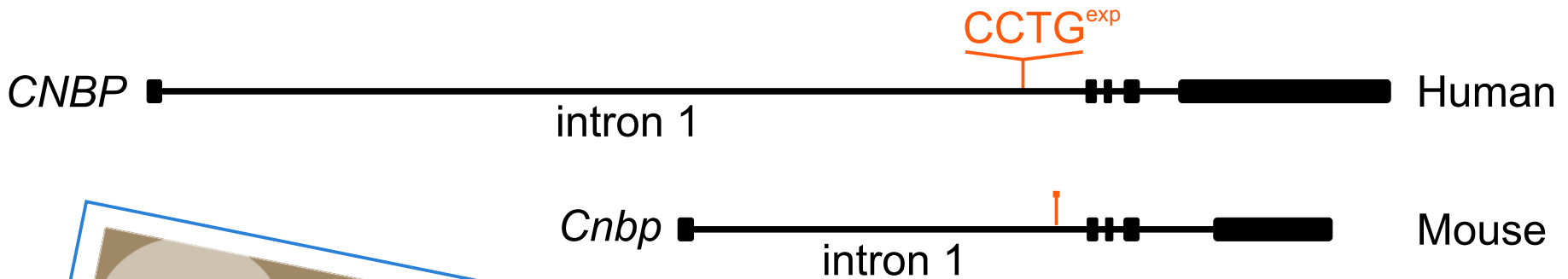
MYOTONIC
DYSTROPHY
FOUNDATION

Care and a Cure

*Myotonic Myotonic Dystrophy Type 2
Mouse Models, Pathomechanism and Therapy*

Experimental strategy

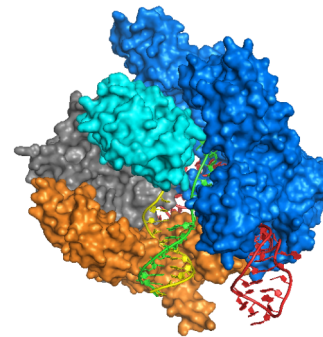
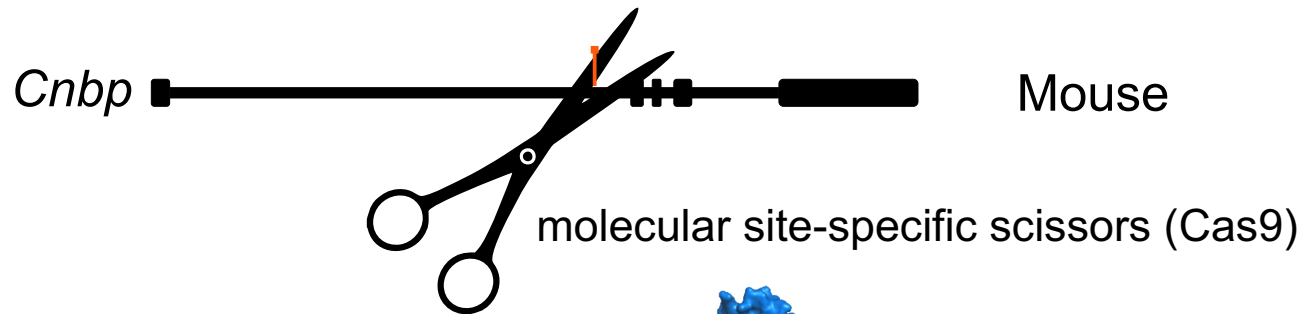
1. Chose the right place in the mouse *Cnbp* gene (DNA).



www.jax.org

Experimental strategy

2. Cut *Cnbp* gene in appropriate place with molecular scissors.



Anders et al, Nature 2014

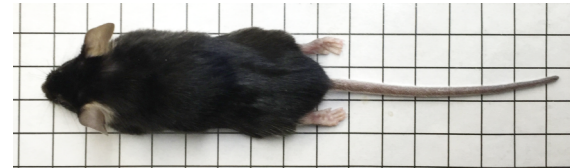
Does it work?



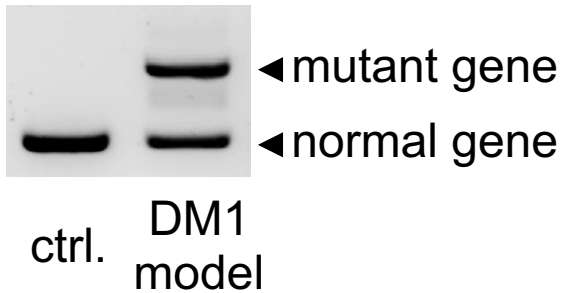
Yes! :-)

Ruan Oliveria
(PhD candidate
in Swanson Lab)

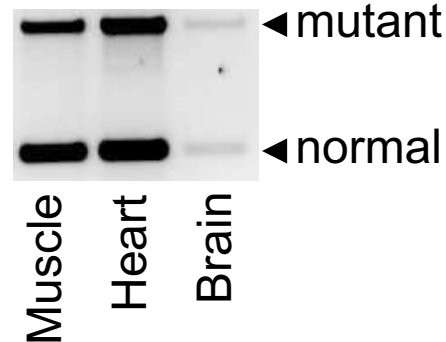
Novel DM1 mouse model



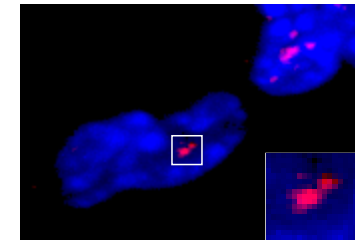
Dmpk DNA



Dmpk RNA



RNA foci

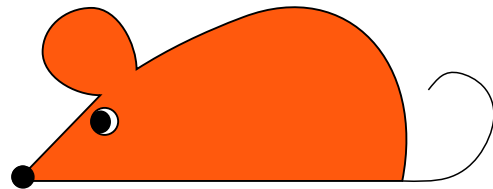


CUG repeats

This mouse model is under intense investigation!

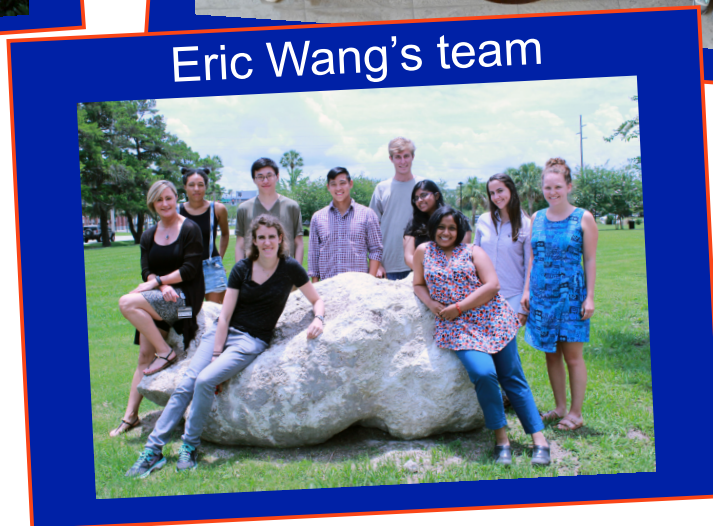
Future perspectives

DM2 mouse model in 2016/2017



DM2

UF UNIVERSITY of FLORIDA



DM in Poland



Poles 37,394,000

DM1 490 (1/76.000)

DM2 318 (1/118.000)

**We are starting
from the scratch!**

Thank You!

